



## Delivering Personalized and Clinically Significant Genomic Insights on an Industry-Leading Platform

MyOme empowers healthcare providers and patients with a comprehensive view of one's personal health risks throughout their lifetime by integrating genomic insights into clinical practice.



### Whole-genome platform



reveals hidden health risks from every test

### Single Sample



provides a holistic view of lifelong health

### Actionable reports



support guideline-aligned, personalized care decisions

### Protected data



upheld by leading privacy and security standards

## MyOme Proactive Health Test Offerings



### Proactive Health SINGLE-GENE RISK™

The Single-Gene Risk™ screening test analyzes actionable genetic variants that are strongly associated with disease areas such as oncology, heart disease, and more.



### Proactive Health MEDICATION RESPONSE™

The Medication Response™ screening test analyzes genetic variants associated with responses to more than 70 commonly-prescribed medications.



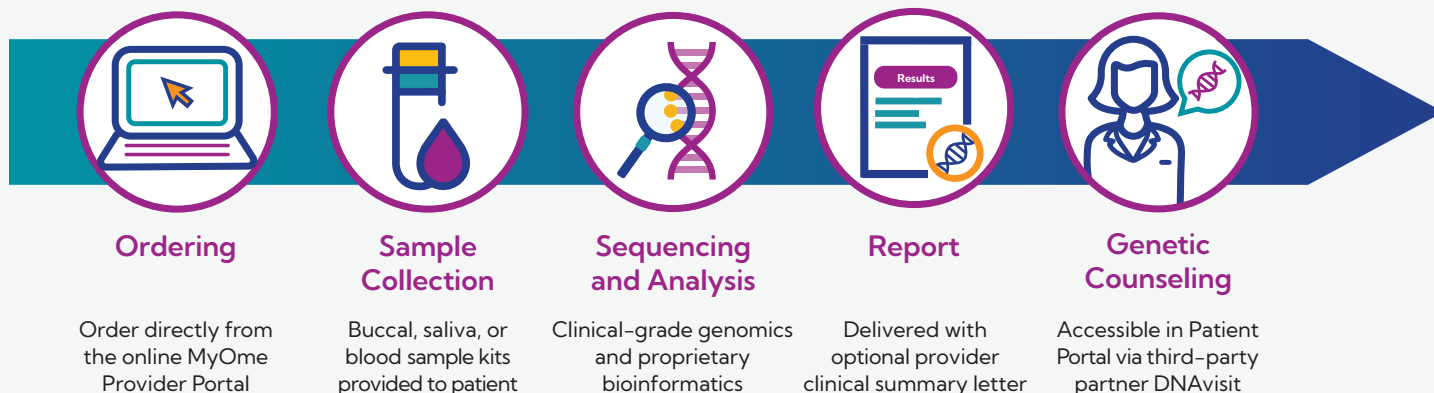
### Proactive Health INTEGRATED PRS™

Integrated Polygenic Risk Score™ (iPRS™) screening tests provide personalized risk assessments for prevalent and serious health conditions by integrating PRS with clinical factors to deliver clinically relevant insights validated across ancestries.

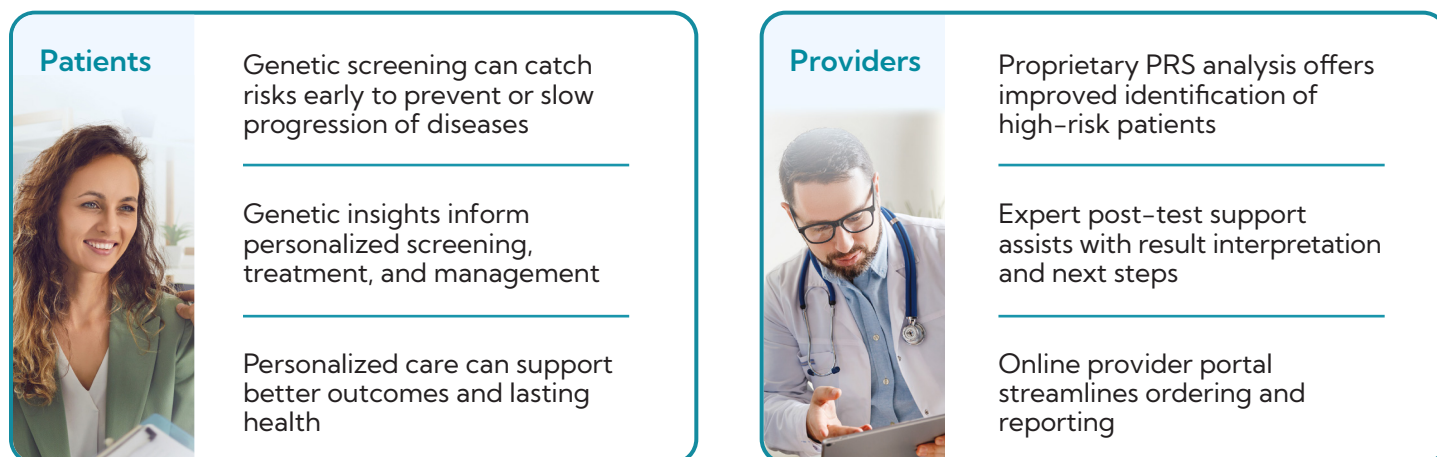


## A Seamless Workflow for Providers and Patients

We make it easy to integrate our reporting into your workflow with a customizable process that requires minimal effort from office staff.



## Benefits of MyOme's Proactive Health Platform



Make MyOme genetic testing part of your clinical care.

Contact us at [support@myome.com](mailto:support@myome.com) or visit our website to get started.

\*To view our full privacy policy, please visit [myome.com/legal/privacy-notice](https://myome.com/legal/privacy-notice).

The tests described above were developed, and their performance characteristics were determined, by MyOme, Inc., a clinical laboratory certified under the Clinical Laboratory Improvement Amendments of 1988 (CLIA) and College of American Pathologist (CAP) accredited to perform high complexity clinical laboratory testing. These tests have not been cleared or approved by the U.S. Food and Drug Administration (FDA). Test results should always be interpreted by a clinician in the context of clinical and familial data with the availability of genetic counseling when appropriate. MyOme is not responsible for the content or accuracy of third-party websites.